

1001 Preston, Suite 652
Houston, Texas 77002-1816



(832) 927-6865
Fax: (832) 927-0056
treasurer.info@itc.hctx.net

DYLAN OSBORNE
HARRIS COUNTY TREASURER

December 15, 2020

County Judge Hidalgo,
Commissioners Ellis, Garcia,
Radack, and Cagle

	YES	NO	ABSTAIN
Judge Lina Hidalgo	<input checked="" type="checkbox"/>	<input type="checkbox"/>	<input type="checkbox"/>
Comm. Rodney Ellis	<input checked="" type="checkbox"/>	<input type="checkbox"/>	<input type="checkbox"/>
Comm. Adrian Garcia	<input checked="" type="checkbox"/>	<input type="checkbox"/>	<input type="checkbox"/>
Comm. Steve Radack	<input checked="" type="checkbox"/>	<input type="checkbox"/>	<input type="checkbox"/>
Comm. R. Jack Cagle	<input checked="" type="checkbox"/>	<input type="checkbox"/>	<input type="checkbox"/>

Honorable Members of the Court:

The Treasurer's Office submitted on October 27, 2020 the transmittal of the County Treasurer's Report to Commissioners Court of monies received and disbursed for the month ending August 31, 2020 as required by the Local Government Code 114.026. As previously stated, we had not received the debt calculations from the Auditor's Office and would submit an amended report once we receive the schedules. Enclosed is the amended report for your viewing.

In accordance with State Law, the books, and accounts of the County Treasurer are available to the Commissioners Court for inspection and examination, as desired. This Report is also filed with the County Auditor.

Sincerely,

Dylan Osborne
Harris County Treasurer

Presented to Commissioners Court

December 15, 2020

Approve: E/G

1001 Preston, Suite 652
Houston, Texas 77002-1816



(832) 927-6865
Fax: (832) 927-0056
treasurer.info@itc.hctx.net

DYLAN OSBORNE
HARRIS COUNTY TREASURER

October 27, 2020

County Judge Hidalgo,
Commissioners Ellis, Garcia,
Radack, and Cagle

	YES	NO	ABSTAIN
Judge Lina Hidalgo	<input checked="" type="checkbox"/>	<input type="checkbox"/>	<input type="checkbox"/>
Comm. Rodney Ellis	<input checked="" type="checkbox"/>	<input type="checkbox"/>	<input type="checkbox"/>
Comm. Adrian Garcia	<input checked="" type="checkbox"/>	<input type="checkbox"/>	<input type="checkbox"/>
Comm. Steve Radack	<input checked="" type="checkbox"/>	<input type="checkbox"/>	<input type="checkbox"/>
Comm. R. Jack Cagle	<input checked="" type="checkbox"/>	<input type="checkbox"/>	<input type="checkbox"/>

Honorable Members of the Court:

Transmittal of the County Treasurer's Report to Commissioners Court of monies received and disbursed for the month ending August 31, 2020, as required by the Local Government Code 114.026. We have not received the debt calculations from the Auditor's Office; therefore, they are not included in this monthly report. We will send an amended report when we receive these schedules.

In accordance with State Law, the books, and accounts of the County Treasurer are available to the Commissioners Court for inspection and examination, as desired. This Report is also filed with the County Auditor.

Sincerely,

Handwritten signature of Dylan Osborne in cursive script.

Dylan Osborne
Harris County Treasurer

Presented to Commissioners Court

October 27, 2020

Approve: G/E



HARRIS COUNTY

Treasurer's Office

MONTHLY REPORT

AUGUST 2020

Monthly Report
Of The
Harris County Treasurer
For the Month Ended
August, 2020



Dylan Osborne
County Treasurer

TABLE OF CONTENTS
December 15, 2020

Detail of Changes in County Funds 1-8

Monthly Electronic Transfer Report 9

Juror Donations 10

Percentage of Return Items 11

Collections of Returns 12

Debts Due To and Owed by the County 13-16

DETAIL OF CHANGES IN COUNTY FUNDS UNAUDITED AND UNRECONCILED AS OF AUGUST 2020

(PROOF OF CASH AT CADENCE BANK)

Account #	Account Name	Beginning Balances	Deposits/Credits	Disbursements	ACH/Wire Disbursements	Outstanding Checks Beginning	Outstanding Checks Ending	MMF Purchases	MMF Sales	Ending Balances
4200033159	Central Disbursement (Funds Swept to General Concentration Acct.)	\$32,908,886.77		\$41,075,210.53	\$133,945,984.10	\$32,908,886.77	\$28,973,597.04	\$175,021,184.83		-\$28,973,597.04
420004048	Juvenile Probation Board	\$2,000,252.88	\$2,998,497.05		\$2,447,275.57		\$2,000,254.10	\$2,122,997.10	\$2,674,217.38	\$2,000,254.10
429684046	Juvenile Probation Board (CM) (Funds Swept to Juvenile Probation Acct.)	\$2,852,544.52			\$4,756,604.29	\$102,120.62	\$44,919.85	\$5,121,492.93	\$2,122,997.10	\$3,403,764.78
4200018036	Payroll (Funds Swept to General Concentration Acct.)	-\$60,476.15		\$42,937.08		\$60,478.15	\$44,575.98	\$62,498,097.76		-\$44,575.98
4200028043	Fee Officer (Funds Swept to General Concentration Acct.)	-\$3,108,380.04		\$1,160,886.37		\$3,108,380.04	\$3,029,951.43	\$1,160,886.37		-\$3,029,951.43
4200028050	Harris County Jury Fund (Funds Swept to General Concentration Acct.)	-\$177,868.20		\$21,578.00	\$64.00	\$177,869.20	\$183,560.00	\$21,840.00		-\$183,560.00
4200018267	HC Community Supervision	\$2,000,239.85	\$7,610,564.73		\$4,211,570.25		\$3,793,748.48	\$3,793,748.48	\$7,192,728.69	\$2,000,254.10
429618267	HC Community Supervision (CM) (Funds Swept to Community Supervision Acct.)	\$1,790,011.21		\$72,977.39		\$141,601.47	\$28,187.32	\$11,404,298.94	\$3,793,748.48	\$5,168,991.44
4200038678	HC Payroll Special Disb (Funds Swept to General Concentration Acct.)	-\$2,878.90		\$548.17		\$2,878.80	\$2,330.73	\$548.17		-\$2,330.73
4200008029	General Concentration	\$10,001,156.84	\$243,218,273.86		\$263,546,728.73		\$15,144,918.43	\$15,144,918.43	\$14,816,364.19	\$10,001,270.31
429608029	General Concentration - (CM)	\$103,445,337.56					\$15,144,918.43	\$15,144,918.43	\$135,144,918.43	\$83,116,783.32
4200011015	HCDC Credit Card Sub Account	\$0.00	\$1,917,893.48		\$1,917,893.48					\$0.00
4200011023	HCCC Credit Card Sub Account	\$0.00	\$894,392.33		\$894,392.33					\$0.00
4200032151	TR Senior Lien Revenue & Refunding Bonds Ser 2019A-CI	\$7,075.47	\$0.90		\$0.00					\$7,076.37
4200032169	HC Tax and Subordinate Lien Rev Ref Bids Series 2019B-DS	\$3,398,341.02	\$200.53		\$3,130,825.00					\$285,616.55
4200032177	HC Tax and Subordinate Lien Rev Ref Bids Series 2019B-CI	\$4,424.47	\$0.56		\$0.00					\$4,425.03

DETAIL OF CHANGES IN COUNTY FUNDS UNAUDITED AND UNRECONCILED AS OF AUGUST 2020

(PROOF OF CASH AT CADENCE BANK)

Account #	Account Name	Beginning Balances	Deposits/Credits	Disbursements	ACH/Wire Disbursements	Outstanding Checks Beginning	Outstanding Checks Ending	MMF Purchases	MMF Sales	Ending Balances
4200032185	HC Perm Improvement Ref Bonds Series 2019A-CI	\$1,523.73	\$0.19	\$0.00	\$0.00					\$1,523.92
4200032193	HC Unlimited Tax Road Ref Bonds Series 2019A-CI	\$1,857.33	\$0.24	\$0.00	\$0.00					\$1,857.57
4200063438	HC Fire Marshal State Forfeited Assets	\$2,277.24	\$0.29	\$0.00	\$0.00					\$2,277.53
4200053439	HC Fire Marshal State Forfeited Assets Chapter 18	\$47,067.82	\$5.98	\$0.00	\$0.00					\$47,073.80
4200014035	Harris County Juvenile Supervision Fees	\$477,893.20	\$2,871.49	\$110.00	\$110.00					\$480,654.69
4200024471	HC Gen Obligation Commercial Paper Series D-2	\$75,479.19	\$5,460,022.60	\$5,460,078.29	\$5,460,078.29					\$71,423.50
4200024489	HC Gen Obligation Commercial Paper Series D-3	\$14.61	\$0.00	\$0.00	\$0.00					\$14.61
4200015164	HC Justice of the Peace Courts Credit Card	\$0.00	\$1,670,768.35	\$1,670,768.35	\$1,670,768.35					\$0.00
4200025395	Care for Elders Program	\$19,695.01	\$2.50	\$0.00	\$0.00					\$19,697.51
4200035790	HC Domestic Relations Credit Card	\$0.00	\$11,631.20	\$11,631.20	\$11,631.20					\$0.00
4200035808	HC Public Health Services Credit Card	\$0.00	\$251,048.09	\$251,048.09	\$251,048.09					\$0.00
4200035816	HC Public Infrastructure/Engineering Credit Card	\$0.00	\$1,240,296.01	\$1,240,296.01	\$1,240,296.01					\$0.00
4200035824	HC Sheriffs Office Credit Card	\$0.00	\$48,657.81	\$48,657.81	\$48,657.81					\$0.00
4200035832	HC Fire Marshal Credit Cards	\$0.00	\$21,990.00	\$21,990.00	\$21,990.00					\$0.00
4200035840	HC Forensic Sciences Credit Card	\$0.00	\$4,775.40	\$4,775.40	\$4,775.40					\$0.00
4200035865	HC Universal Services Credit Card	\$0.00	\$20,465.00	\$20,465.00	\$20,465.00					\$0.00
4200035873	HC Public Library Credit Card	\$0.00	\$3,032.70	\$3,032.70	\$3,032.70					\$0.00
4200017467	HC Toll Sr Lien Revenue & Refund Bonds 2018A	\$1,000,127.05	\$26,434,589.56	\$21,305,610.19	\$21,305,610.19			\$21,306,585.26	\$26,435,364.63	\$1,000,127.05
429617467	HC Toll Sr Lien Rev 2018A Construction - (CM)	\$22,559,630.82						\$26,435,364.63	\$21,306,585.26	\$27,668,410.28

DETAIL OF CHANGES IN COUNTY FUNDS UNAUDITED AND UNRECONCILED AS OF AUGUST 2020

(PROOF OF CASH AT CADENCE BANK)

Account #	Account Name	Beginning Balances	Deposits/Credits	Disbursements	ACH/Wire Disbursements	Outstanding Checks Beginning	Outstanding Checks Ending	MMF Purchases	MMF Sales	Ending Balances
4200068015	HC-Gen Oblig Commercial Paper	\$53,563,817.84	\$247,073.27		\$78,146,346.17					\$5,864,544.94
4200068031	HC Unlimited Tax Road & Refunding Bonds Ser 2006B	-\$3,983.41	\$11,000.24		\$2,289.22					\$4,747.61
4200058032	HC Tx Holders/Int Rd Pipeline Relocation Cost Share	\$6.96	\$0.00		\$0.00					\$6.96
4200068064	HC Worker's Compensation	\$500,063.31	\$902,092.48		\$1,207,479.78			\$811,218.24	\$505,830.72	\$500,063.53
429668064	HC Worker's Compensation - (CM)	\$6,380,450.79						\$505,830.72	\$811,218.24	\$6,075,063.27
4200048082	HC Public Improvement Contingency	\$8,000,831.28	\$10,239,259.59		\$12,536,789.84			\$9,846,836.22	\$7,548,920.65	\$8,001,016.40
429668082	HC Public Improvement Contingency - (CM)	\$18,847,922.30						\$7,548,920.65	\$9,846,836.22	\$16,550,206.73
4200058099	HC Metro Street Improvement	\$1,267,189.10	\$153.56		\$98,447.49			\$0.00	\$0.00	\$1,168,904.17
429668099	HC Metro Street Improvement - (CM)	\$0.00						\$0.00	\$0.00	\$0.00
4200048330	HC VISA/Mastercard Pilot Program	\$0.00	\$0.00		\$0.00					\$0.00
4200078402	HC Attorney SPU Fund State	\$145,362.65	\$18.31		\$1,644.90			\$0.00	\$0.00	\$143,736.06
429678402	HC Attorney SPU Fund State - (CM)	\$0.00						\$0.00	\$0.00	\$0.00
4200048405	HC Attorney SPU Fund	\$485,114.51	\$61.82		\$500.00					\$484,676.13
4200028407	District Attorney Federal Forfeited Assets/US Treasury	\$90,952.67	\$11.59		\$0.00					\$90,964.23
4200038414	District Attorney Federal Forfeited Assets US Justice	\$665,398.31	\$67.08		\$0.00					\$665,465.39
4200068421	District Attorney State Forfeited Assets Chapter 59	\$500,062.81	\$68,543.66		\$51,603.61			\$52,099.79	\$69,039.12	\$500,063.53
429668421	District Attorney State Forfeited Assets Chapter 59 - (CM)	\$10,244,308.59						\$69,039.12	\$52,099.79	\$10,261,247.92
4200078428	District Attorney Hot Checks Fees	\$1,796.71	\$4,563.65		\$1,575.00			\$0.00	\$0.00	\$4,747.36
429678428	District Attorney Hot Checks Fees - (CM)	\$0.00						\$0.00	\$0.00	\$0.00
4200068435	District Attorney Spec Investigation Gambling Proceeds	\$250,031.73	\$20,394.77		\$46,469.35			\$46,568.00	\$20,491.39	\$250,031.76
429668435	District Attorney Spec Investigation Gambling Proceeds-(CM)	\$1,969,722.65						\$20,491.39	\$46,568.00	\$1,943,648.04
4200098442	Constable (Pct 1) Federal Forfeited Assets US Treasury	\$259.23	\$0.03		\$0.00					\$259.26

DETAIL OF CHANGES IN COUNTY FUNDS UNAUDITED AND UNRECONCILED AS OF AUGUST 2020

(PROOF OF CASH AT CADENCE BANK)

Account #	Account Name	Beginning Balances	Deposits/Credits	Disbursements	ACH/Wire Disbursements	Outstanding Checks Beginning	Outstanding Checks Ending	MMF Purchases	MMF Sales	Ending Balances
4200068443	Constable (Pct 2) Federal Forfeited Assets US Treasury	\$10.85	\$0.00		\$0.00					\$10.85
4200078444	Constable (Pct 4) Federal Forfeited Assets US Treasury	\$4,765.45	\$0.61		\$0.00					\$4,766.46
4200068445	Constable (Pct 5) Federal Forfeited Assets US Treasury	\$988.81	\$0.13		\$0.00					\$988.94
4200058446	Constable (Pct. 1) State Forfeited Assets Chapter 18	\$425,639.32	\$6,711.33		\$37,079.29					\$395,271.36
4200048447	Constable (Pct. 3) State Forfeited Assets Chapter 18	\$85,779.60	\$8.36		\$0.00					\$85,787.96
4200038448	Constable (Pct. 5) State Forfeited Assets Chapter 18	\$142,888.72	\$18.13		\$0.00					\$142,706.85
4200028449	Constable (Pct 1) Federal Forfeited Assets US Justice	\$121,905.70	\$15.43		\$539.99					\$121,281.14
4200088450	Constable (Pct 2) Federal Forfeited Assets US Justice	\$62.93	\$0.01		\$0.00					\$62.94
4200078451	Constable (Pct 4) Federal Forfeited Assets US Justice	\$54,016.89	\$8.13		\$0.00					\$64,025.02
4200068452	Constable (Pct 5) Federal Forfeited Assets US Justice	\$63,881.62	\$1,386.15		\$0.00					\$65,267.77
4200058453	Constable (Pct. 3) Federal Forfeited Assets US Justice	\$0.00	\$0.00		\$0.00					\$0.00
4200048454	Constable (Pct. 3) Federal Forfeited Assets US Justice	\$0.66								\$0.66
4200038455	Constable (Pct. 2) State Forfeited Assets Chapter 18	\$119,019.41	\$15.12		\$0.00					\$119,034.53
4200028456	Constable (Pct. 1) State Forfeited Assets Chapter 59	\$143,772.19	\$17.71		\$7,200.72					\$136,589.18
4200018457	Constable (Pct. 4) State Forfeited Assets Chapter 18	\$723,924.08	\$91.97		\$0.00					\$724,016.05
4200008458	Constable (Pct. 6) State Forfeited Assets Chapter 18	\$9,321.59	\$1.06		\$0.00					\$9,322.65
4200048462	Constable (Pct. 2) State Forfeited Assets Chapter 59	\$126,597.52	\$16.05		\$1,650.50					\$124,963.07
4200038463	Commissioners Court State Forfeited Chapter 59	\$750,095.27	\$6,335.46		-\$34.21			\$0.00	\$6,369.65	\$750,095.29
428638463	Commissioners Court State Forfeited Chapter 59 - (CM)	\$712,921.48						\$6,369.65	\$0.00	\$719,291.11

DETAIL OF CHANGES IN COUNTY FUNDS UNAUDITED AND UNRECONCILED AS OF AUGUST 2020

(PROOF OF CASH AT CADENCE BANK)

Account #	Account Name	Beginning Balances	Deposits/Credits	Disbursements	ACH/Wire Disbursements	Outstanding Checks Beginning	Outstanding Checks Ending	MMF Purchases	MMF Sales	Ending Balances
4200028464	Constable (Pct. 3) State Forfeited Assets Chapter 59	\$59,922.21	\$7.61		\$0.00					\$59,929.82
4200018465	Constable (Pct. 4) State Forfeited Assets Chapter 59	\$343,121.25	\$644.45		\$0.00					\$343,765.70
4200008466	Constable (Pct. 5) State Forfeited Assets Chapter 59	\$278,176.14	\$35.94		\$17.50					\$278,193.98
4200098467	Constable (Pct. 6) State Forfeited Assets Chapter 59	\$48,296.14	\$8.14		\$0.00					\$48,304.28
4200088468	Constable (Pct. 8) State Forfeited Assets Chapter 59	\$16,377.97	\$2.07		\$643.45					\$15,736.59
4200078469	Constable (Pct. 8) State Forfeited Assets Chapter 59	\$120,055.13	\$15.20		\$685.49					\$119,384.84
4200048470	HC Sheriff Federal Forfeited Assets US Treasury	\$797,665.41	\$15,077.89		\$90,512.00					\$722,251.30
4200078477	HC Sheriff Forfeited Assets US Justice	\$0.00	\$9,914.00		\$32,042.73			\$32,094.42	\$9,965.69	\$0.00
42968477	HC Sheriff Forfeited Assets US Justice - (CM)	\$1,254,693.65						\$9,965.69	\$32,094.42	\$1,232,465.12
4200088484	HC Sheriff State Forfeited Assets Chapter 59	\$500,063.52	\$63.53		-\$60.29			\$0.00	\$123.81	\$500,063.53
42968484	HC Sheriff State Forfeited Assets Chapter 59 - (CM)	\$1,254,947.18						\$123.81	\$0.00	\$1,255,070.99
4200078485	HC Sheriff State Forfeited Assets - Chapter 18	\$250,031.76	\$7,378.49		-\$3.06			\$0.00	\$7,379.55	\$250,031.76
429678485	HC Sheriff State Forfeited Assets - Chapter 18 - (CM)	\$52,285.98						\$7,379.55	\$0.00	\$59,595.53
420008490	Sheriff State Forfeited Assets - HDT	\$824,373.77	\$104.74		\$0.00			\$0.00	\$0.00	\$824,478.51
4200038505	HC Treasurer's Escheatment	\$1,132,290.36	\$143.86		\$0.00					\$1,132,434.22
4200038595	HC Texas Toll Sr Lien Rev Bds Ser 2009C Construction	\$976,064.45	\$123.40		\$28,396.00					\$949,791.85
4200018721	HC District Attorney Hot Checks Fees	\$0.76	\$0.00		\$0.00					\$0.76
4200028735	HC Fee Officer Cash Bond	\$4,212,256.45	\$175,020.00		\$2,859.95					\$4,394,316.50
4200048777	HC Obligation & Rev Series 2002 D/S	\$213,016.93	\$27.06		\$0.00					\$213,042.99
4200048785	Metro General Mobility Program	\$15,835,391.60	\$1,865.22		\$1,627,212.38					\$14,210,064.44

DETAIL OF CHANGES IN COUNTY FUNDS UNAUDITED AND UNRECONCILED AS OF AUGUST 2020

(PROOF OF CASH AT CADENCE BANK)

Account #	Account Name	Beginning Balances	Deposits/Credits	Disbursements	ACH/Wire Disbursements	Outstanding Checks Beginning	Outstanding Checks Ending	MMF Purchases	MMF Sales	Ending Balances
4200048801	Harris County Constitutional Debt Service Funds	\$481,931.16	\$432,843.82		\$0.00					\$924,774.98
4200008870	HC Tx Rd Debt Service Funds	\$333,682.87	\$249,532.17		\$0.00					\$583,215.04
4200068890	HC Commercial Paper Series A-1	\$1,297,162.48	\$2,900,170.16		\$2,900,614.84					\$1,296,717.80
4200058891	HC Commercial Paper Series B	\$25,901.79	\$2.35		\$12,121.90					\$13,782.24
4200048892	HC Commercial Paper Series C	\$3,002,411.81	\$1,695,383.72		\$1,699,340.86					\$2,998,454.67
4200038893	HC Gen Oblig Commercial Paper Series D	\$5,453,296.81	\$3,606,865.54		\$4,300,947.12					\$4,759,215.03
4200088898	HC Tax & Sub Lien Rev Ref Bonds Ser 2012A D/S	\$26,464.50	\$3,500,277.84		\$0.00					\$3,526,742.34
4200018945	HC Unlimited Tax Ref - Project Fund	\$147.75	\$500.04		\$439.53					\$200.26
4200089037	HCTRA Revenue	\$5,000,811.45	\$256,662,455.70		\$46,355,779.22			\$37,484,233.78	\$247,790,886.47	\$5,000,635.24
429689037	HCTRA Revenue - (CM)	\$6,735,438.75						\$247,790,886.47	\$37,484,233.78	\$217,042,091.44
4200029056	HCTRA Renewal and Replacement	\$5,000,635.25	\$10,120,635.25		\$369,096.09			\$369,719.30	\$10,121,258.46	\$5,000,635.25
429629058	HCTRA Renewal and Replacement - (CM)	\$7,894,617.52						\$10,121,258.46	\$369,719.30	\$17,646,156.68
4200069260	HCTRA Sr Lien Rev & Ref Bonds Series 2002 Construction	\$25,482.75	\$40,002.92		\$57,777.48					\$7,708.21
4200009365	HCTRA Sr Lien Rev & Ref Bonds Series 2008B Con	\$30,698.32	\$150,003.52		\$167,394.79					\$13,305.05
4200019372	HCTRA Sr Lien Rev Bonds, Series 2009A Construction	\$21,481.88	\$2.73		\$0.00					\$21,484.61
4200099390	HCTRA Sr Lien Rev Commercial Paper Notes, Ser E-1	\$53,704.86	\$4,400,013.03		\$4,404,647.82					\$49,070.07
4200069391	HCTRA Sr Lien Rev Commercial Paper Notes, Ser E-2	\$35,694.05	\$4,290,006.71		\$4,279,062.50					\$36,638.26
4200009745	HC CTS ERP Retainage	\$4,278,614.87	\$543.59		\$0.00					\$4,279,158.46
	Total Harris County	\$317,481,089.10	\$591,267,761.81	\$42,738,124.16	\$676,948,968.79	\$36,562,193.16	\$30,306,122.36	\$683,439,010.20	\$628,209,763.38	\$450,587,075.58

DETAIL OF CHANGES IN COUNTY FUNDS UNAUDITED AND UNRECONCILED AS OF AUGUST 2020

(PROOF OF CASH AT CADENCE BANK)

Account #	Account Name	Beginning Balances	Deposits/Credits	Disbursements	ACH/Wire Disbursements	Outstanding Checks Beginning	Outstanding Checks Ending	MMF Purchases	MMF Sales	Ending Balances
			+	-	-		-	+	-	
	HARRIS COUNTY FLOOD									
4200104927	FC Central Disbursement (Funds Swept to Flood Control District Acct.)	\$20,320,054.53		\$11,796,493.91		\$20,320,054.53	\$18,427,247.02	\$29,148,722.24		-\$18,427,247.02
4200000224	HCFC District	\$5,000,633.61	\$20,198,976.20		\$32,285,009.93			\$20,298,905.17	\$8,202,803.13	\$5,000,601.92
4296000224	HCFC District (CM)	\$19,939,034.25						\$8,202,803.13	\$20,298,905.17	\$7,843,832.21
4200010280	HCFC Commercial Paper	\$1,116,521.95	\$141.46		\$5,000.00					\$1,111,663.41
4200050336	HCFC Tax Ref Bds Ser 04 Project Fund	\$179.86	\$1,500.06		\$1,283.95					\$396.07
4200000364	HCFC Imp Bonds Ser 2007 Project Fund	\$5,601.63	\$0.71		\$124.48					\$5,477.86
4200010376	HCFC Army Corps of Engineers Sims Bayou	\$25,556.31	\$3.25		\$0.00					\$25,559.56
4200050385	HCFC Clear Creek Escrow Account	\$506.87	\$0.06		\$0.00					\$506.93
4200090399	HCFC Tax Ref Bonds, Ser 2008A D/S	\$2,289.62	\$284.16		\$0.00					\$2,573.78
4200010439	HCFC Debt Service Funds	\$163,375.00	\$12,153.20		\$0.00					\$175,528.20
4200060440	HCFC - Tax Ref Bonds Taxable Investment	\$665.45	\$0.08		\$0.00					\$665.53
4200060442	HCFC - District Contract Tax Ref Bd. 2014A - DS	\$843.96	\$0.11		\$0.00					\$844.07
4200030445	HCFC - District Contract Tax Ref Bd Ser 2015B - DS	\$688.68	\$0.09		\$0.00					\$688.77
4200014605	HCFC - District Limited Tax Comm Paper - Ser H Con	\$101,884.36	\$8,533,600.47		\$8,067,221.79					\$569,263.06
4200014647	HCFC-District Contract Tax Ref Bd. 2017A-DS	\$1,565.45	\$0.20		\$0.00					\$1,565.65
4200014654	HCFC - District Limited Tax Commercial Paper - Ser H D/S	\$1,467,868.52	\$5,169.34		\$383,588.27					\$1,089,449.59
4200032201	HCFC-District Contract Tax Ref Bd Ser 2019A-Cost Issuance	\$4,564.91	\$0.58		\$0.00					\$4,565.49
4200032219	HCFC-District Contract Tax Ref Bd Series 2019A-DS	\$	471.47		\$0.00					\$471.53
	Total Flood Control	\$7,513,017.39	\$28,751,830.03	\$11,796,493.91	\$58,104,466.63	\$20,320,054.53	\$18,427,247.02	\$57,650,330.54	\$28,501,608.30	-\$2,584,573.37

MONTHLY ELECTRONIC ACTIVITY REPORT

August 1-31, 2020

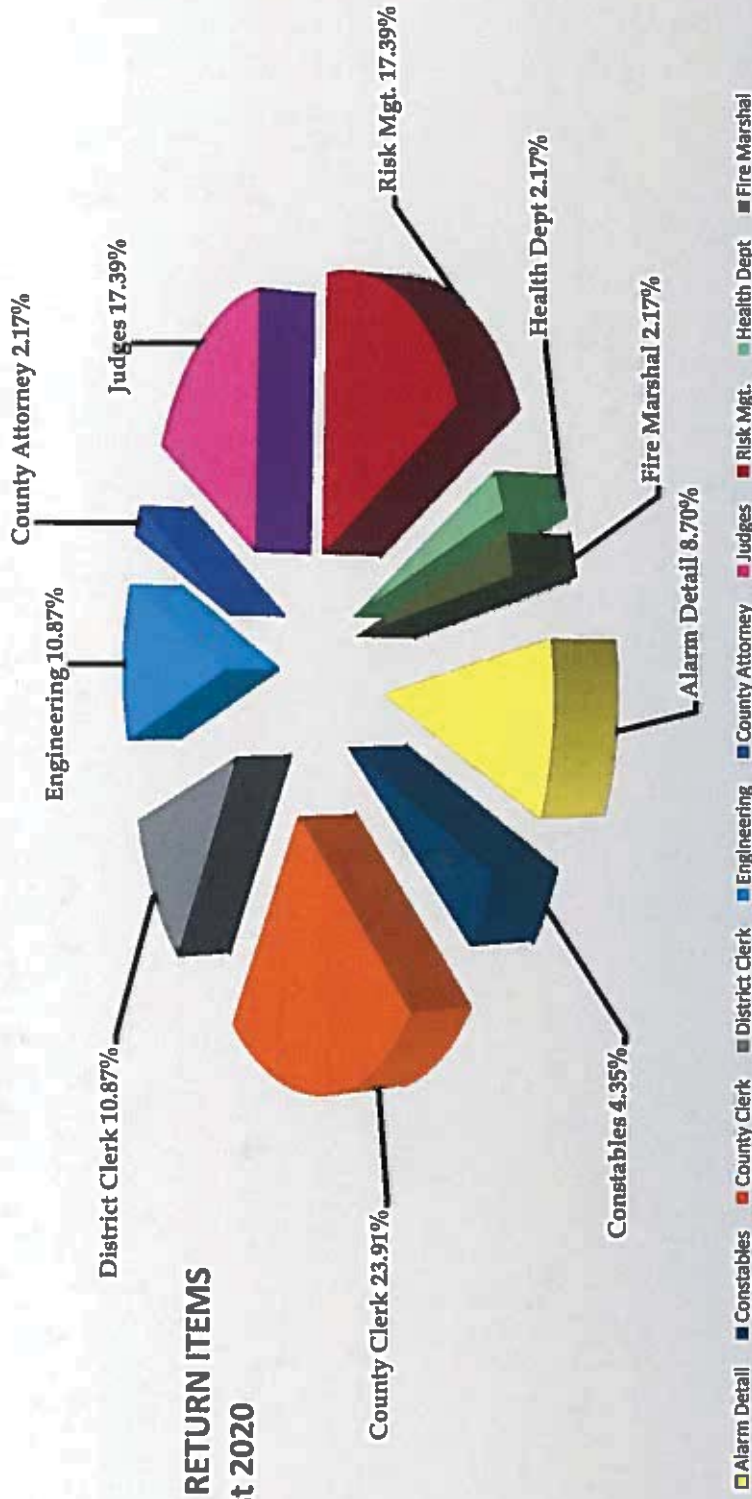
DATE	FT	COUNTY	AMOUNT	BEI	PORT	ACH	AMOUNT	ACH	COUNTY	ACH	TAX OFFICE	AMOUNT	BEITS	COUNTY	FLOOD	CSSD	AMOUNT	BEITS	PORT	AMOUNT
8/3/2020	3		\$50,728.49	2			\$51,375,620.00												2	\$626,308.63
8/4/2020	2		\$9,678.75	1			\$633,604.21				124	\$6,459,416.76								
8/5/2020	8		\$19,437,841.82	1			\$376,667.00				124	\$5,129,542.01								
8/6/2020	12		\$59,250,469.84	4		7	\$1,016,669.92													
8/7/2020	3		\$110,943.26			2	\$88,304.40		2		119	\$763,084.19								
8/10/2020	3		\$1,388,693.00						1		137	\$136.45		4			\$11,437,998.04	3		\$571,141.70
8/11/2020	7		\$279,880.71	3			\$8,609,419.30				36	\$476,928.00								
8/12/2020	8		\$5,143,309.67			7	\$1,268,153.95													
8/13/2020	43		\$44,616,898.22	1			\$8,333.00				3	\$1,197,729.44								
8/14/2020	7		\$6,671,207.08	1		4	\$1,090,991.89				122	\$3,594,776.70								
8/17/2020	2		\$14,881.00								125	\$3,699,619.20						2		\$685,330.27
8/18/2020	1		\$10,495.00	2			\$25,620,445.89													
8/19/2020	5		\$63,690.59																	
8/20/2020	6		\$9,029,842.79	3			\$18,568,195.71				3	\$197,030.27								
8/21/2020	4		\$99,755.79																	
8/24/2020	2		\$5,059.06																	
8/25/2020	5		\$5,004,863.38	1			\$621,465.25													
8/26/2020	9		\$3,560,978.95	6		2	\$13,212,176.44													
8/27/2020	39		\$76,607,253.08	1		6	\$30,000.00													
8/28/2020	1		\$2,930.00								3	\$18,507.29								
8/31/2020	10		\$30,550.42	2			\$28,461.11												2	\$701,718.38
TOTAL	180		\$231,389,839.90	28		28	\$123,808,653.80	28	\$15,517,021.15	3	\$763,220.64	796	\$31,587,144.61	8	\$23,032,668.59	11	\$3,161,521.32			

GRAND TOTAL	ITEMS	DOLLAR AMT.
1054	1054	\$428,286,070.01

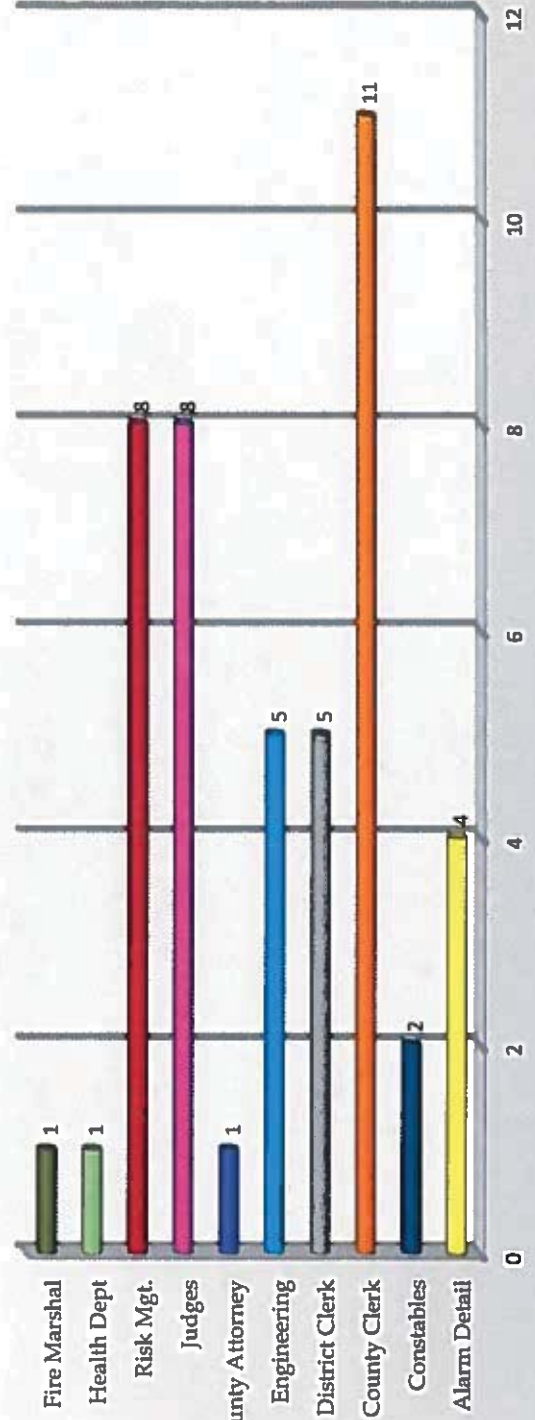
*** Bank and County Holiday
 ** Bank Holiday
 County Holiday

There were no Juror Donations for the month of August. Jury service was suspended in Harris County through June 30 due to COVID-19. On July 6, jury service resumed in Harris County's District Courts.

PERCENTAGE OF RETURN ITEMS August 2020



Number of Return Items Received by Department



Alarm Detail	4
Constables	2
County Clerk	11
District Clerk	5
Engineering	5
County Attorney	1
Judges	8
Risk Mgt.	8
Health Dept	1
Fire Marshal	1
TOTAL	46

There were no collection of funds for return items during the month of August 2020.

The attached Fund Financial Statements and Schedule of Debt detail the debts due to and owed by the County. These schedules are excerpts from the Auditor's Monthly Financial Statements.

HARRIS COUNTY, TEXAS
STATEMENT OF NET POSITION
PROPRIETARY FUNDS
August 31, 2020

	Enterprise Funds			Internal Service Funds
	Toll Road	Nonmajor Enterprise Funds	Total	
ASSETS				
Current assets				
Cash and cash equivalents	\$ 558,766,390	\$ 39,068,879	\$ 597,835,269	\$ 194,548,682
Investments	777,276,796	-	777,276,796	17,764,164
Receivables, net	10,944,028	1,120,187	12,064,215	3,364,198
Due from other funds	158	-	158	1,832,520
Other receivables	41,233,265	-	41,233,265	6,275,345
Prepays and other assets	121,660	-	121,660	898,858
Inventories	4,970,150	-	4,970,150	1,319,294
Restricted cash and cash equivalents	61,836,166	-	61,836,166	-
Restricted investments	96,721,754	-	96,721,754	-
Total current assets	1,551,870,367	40,189,066	1,592,059,433	226,003,061
Noncurrent assets				
Notes receivable	40,370	-	40,370	-
Investments, held as collateral by others	38,900,000 *	-	38,900,000	-
Capital assets				
Land and construction in progress	1,914,165,228	6,364,202	1,920,529,430	250,000
Intangible asset, net of amortization	174,135,000	-	174,135,000	-
Other capital assets, net of depreciation	1,050,285,695	12,346,042	1,062,631,737	22,671,091
Total noncurrent assets	3,177,526,293	18,710,244	3,196,236,537	22,921,091
Total assets	4,729,396,660	58,899,310	4,788,295,970	248,924,152
DEFERRED OUTFLOWS OF RESOURCES				
Deferred charge on refunding	60,608,011	-	60,608,011	-
Accumulated decrease in fair value of hedging derivatives	54,821,587	-	54,821,587	-
Total deferred outflows of resources	115,429,598	-	115,429,598	-
LIABILITIES				
Current liabilities				
Vouchers payable	77,877,602	1,335	77,878,937	422,505
Retainage payable	37,952,730	-	37,952,730	-
Customer deposits and other	159,636	-	159,636	-
Due to other funds	6,749,824	36,472	6,786,296	1,092,407
Estimated outstanding claims	-	-	-	16,699,347
Incurred but not reported claims	-	-	-	41,972,317
Unearned revenue	82,078,457	5,823,179	87,901,636	-
Current portion of long-term liabilities	3,844,101	-	3,844,101	-
Total current liabilities	208,662,350	5,860,986	214,523,336	60,186,576
Noncurrent liabilities				
Noncurrent portion of long-term liabilities	2,128,019,494	-	2,128,019,494	-
Commercial Paper Payable	227,715,000	-	227,715,000	-
Total noncurrent liabilities	2,355,734,494	-	2,355,734,494	-
Total liabilities	2,564,396,844	5,860,986	2,570,257,830	60,186,576
DEFERRED INFLOWS OF RESOURCES				
Accumulated decrease in fair value of hedging derivatives	54,821,587	-	54,821,587	-
Total deferred inflows of resources	54,821,587	-	54,821,587	-
NET POSITION				
Net investment in capital assets	1,010,283,161	18,710,244	1,028,993,405	22,921,091
Restricted for:				
Capital projects	4,970,150	-	4,970,150	-
Debt service	154,725,141	-	154,725,141	-
Toll road	1,055,629,375	-	1,055,629,375	-
Unrestricted				
	-	34,328,080	34,328,080	165,816,485
Total net position	\$ 2,225,607,827	\$ 53,038,324	\$ 2,278,646,151	\$ 188,737,576

* The County has pledged \$19M to Citibank and \$19.9M to JP Morgan from two FNMA notes with a combined par value of \$38.9M, under the terms of the swap agreements related to the Senior Lien Revenue Refunding 2007B bonds

** Proprietary funds are stated on an "economic resource" measurement focus.

HARRIS COUNTY, TEXAS
SCHEDULE OF DEBT - COMMERCIAL PAPER AND BONDED DEBT - ALL FUNDS
August 31, 2020

	Stated Rate	Outstanding Balances
Toll Road Debt:		
Toll Road Bonds	1.450 - 5.250	\$ 1,932,530,000
Unamortized Premium (Discount) Net		195,489,494
Accrued Interest		3,844,101
Commercial Paper Payable - Series E-1		148,775,000
Commercial Paper Payable - Series E-2		78,940,000
Total Toll Road Bonds Payable and Commercial Paper		2,359,578,595
 Flood Control Debt:		
Flood Control Bonds	0.250 - 5.250	489,560,000
Unamortized Premiums		49,654,590
Commercial Paper Payable - Series H		202,025,000
Total Flood Control Bonds Payable and Commercial Paper		741,239,590
 Other Bonds Payable:		
Road Bonds	1.500 - 5.250	644,980,000
Permanent Improvement	0.350 - 5.500	643,410,000
General Obligation, Revenue Refunding 2002	5.000 - 5.860	17,672,134
Tax & Subordinate Lien, Revenue Refunding Bonds	3.000 - 5.250	155,410,000
Unamortized Premiums - Road		62,745,171
Unamortized Premiums - Permanent Improvement		50,399,807
Unamortized Premiums - General Obligation		15,508,643
Accrued Interest on Capital Appreciation Bonds - General Obligation		32,458,681
Total Other Bonds Payable		1,622,584,436
 Other Commercial Paper Payable:		
Commercial Paper Payable - Series A-1		21,546,000
Commercial Paper Payable - Series B		9,475,000
Commercial Paper Payable - Series C		117,295,000
Commercial Paper Payable - Series D		59,931,000
Commercial Paper Payable - Series D-2		28,265,000
Commercial Paper Payable - Series J-1		350,000
Total Other Commercial Paper Payable		236,862,000
 Total Bonds Payable and Commercial Paper		
		4,960,264,621
 Other Long-Term Liabilities:		
Loan Payable		14,113,585
OPEB Obligation		937,851,473
Net Pension Liability		306,046,823
Pollution Remediation Obligation		1,636,190
Total Other Long-Term Liabilities		1,259,648,071
 Total Debt		
		\$ 6,219,912,692

HARRIS COUNTY, TEXAS
BALANCE SHEET
GOVERNMENTAL FUNDS
AUGUST 31, 2020

	General Fund	Public Contingency Fund	Mobility Fund	General Debt Service Funds	Total General Fund Group	Nonmajor Governmental Funds	Total Governmental Funds
ASSETS							
Cash and investments:							
Cash and cash equivalents	\$ 609,942,728	\$ 41,605,024	\$ 392,122,139	\$ -	\$ 1,043,669,891	\$ 684,231,179	\$ 1,727,901,070
Investments	-	121,872,866	-	-	121,872,866	92,366,716	214,239,582
Receivables:							
Taxes, net	14,659,729	-	-	-	14,659,729	1,445,738	16,105,467
Accounts	28,237,902	-	5,315,797	-	33,553,699	49,459,620	83,013,319
Capital leases	201,300	-	-	-	201,300	-	201,300
Other	2,623	-	-	-	2,623	250,221	252,844
Due from other funds	3,115,258	38,188	-	-	3,153,446	68,134,139	71,287,585
Prepays and other assets	505,000	-	-	-	505,000	1,143	506,143
Inventory	2,811,310	-	-	-	2,811,310	-	2,811,310
Restricted cash and cash equivalents	-	-	-	133,293,182	133,293,182	71,521,556	204,814,738
Advances to other funds	140,000	200,000	-	-	340,000	2,157,500	2,497,500
Notes receivable	199,405	9,999,980	-	-	10,199,385	675,400	10,874,785
Total assets	\$ 659,815,255	\$ 173,716,058	\$ 397,437,936	\$ 133,293,182	\$ 1,364,262,431	\$ 970,243,212	\$ 2,334,505,643
LIABILITIES							
Vouchers payable	\$ 23,153,252	\$ 965,843	\$ 3,567,855	\$ -	\$ 27,686,950	\$ 7,531,543	\$ 35,218,493
Due to other funds	3,281,089	3,158,000	1,164	-	6,440,253	30,765,064	37,205,317
Retainage payable	224,713	651,369	1,521,272	-	2,397,354	22,377,294	24,774,648
Due to other governmental units	-	-	-	-	-	13,761	13,761
Bonds payable	104	-	-	-	104	-	104
Capital leases	151,357	-	-	-	151,357	-	151,357
Advances from other funds	-	-	-	-	-	2,497,500	2,497,500
Unearned revenue	200,808	-	-	-	200,808	493,270,311	493,471,119
Total liabilities	27,011,323	4,775,212	5,090,291	-	36,876,826	576,455,473	613,332,299
DEFERRED INFLOWS OF RESOURCES							
Unavailable revenue - property taxes	14,659,729	-	-	-	14,659,729	1,445,738	16,105,467
Total deferred inflows of resources	14,659,729	-	-	-	14,659,729	1,445,738	16,105,467
FUND BALANCES							
Nonspendable	3,456,310	200,000	-	-	3,656,310	2,157,500	5,813,810
Restricted	14,708,277	-	392,347,645	133,293,182	540,349,104	482,568,454	1,022,917,558
Committed	-	-	-	-	-	79,748,933	79,748,933
Assigned	27,414,385	-	-	-	27,414,385	-	27,414,385
Unassigned	572,565,231	168,740,846	-	-	741,306,077	(172,132,886)*	569,173,191
Total fund balances	618,144,203	168,940,846	392,347,645	133,293,182	1,312,725,876	392,342,001	1,705,067,877
Total liabilities, deferred inflows of resources, and fund balances	\$ 659,815,255	\$ 173,716,058	\$ 397,437,936	\$ 133,293,182	\$ 1,364,262,431	\$ 970,243,212	\$ 2,334,505,643

* Negative unassigned fund balance occurs when expenditures are made in anticipation of budgeted revenues.

** Government funds are stated on a "current financial resources" measurement focus.

